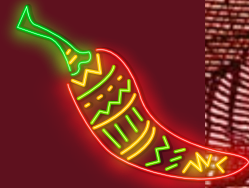


# UPON Angels mexican



## STARTERS

Pico de Gallo with Nachos 

*Crispy strips of corn, chopped tomato, red onion, coriander and lime juice*

Nachos with Guacamole 


Nachos with beef chilli, cheddar cheese and jalapeños  
Breaded jalapeños with cream cheese sauce

## TACOS

Chicken, romaine lettuce and pico de gallo

Beef chilli, red beans and coriander

Sautéed prawns, avocado and mango

Avocado, red onion, cherry tomatoes and corn 

## BURRITOS

Marinated chicken, rice, black beans, bacon and cheese

Shredded pork belly, black beans, pico de gallo and cheese

Sautéed prawns, rice and avocado


Sautéed vegetables, rice, beans and cheese 

## QUESADILLAS

Wheat tortilla with chicken, tomato and cheese

Wheat tortilla with beef, peppers, chorizo and cheddar cheese

Wheat tortilla with prawns, jalapeños and cheese

Wheat tortilla with spinach, mushrooms and sour cream 

## DESSERT

Churros

*wrapped in sugar and cinnamon, dulce de leche or Nutella sauce*

Chocolate cake with chilli



 Vegan

Choose a menu common to the group.

It is not possible to choose items from different menus.

Advise in case of dietary restrictions.

Two drinks included: soft drink, water with/without water, beer and glass of glass.

Divine 6 itens 33€/person

Divine 9 itens 40€/person

Divine 12 itens 45€/person

*\*Consider that values change.*

Extras:

Extra Item 5€/person

Welcome Drink 8€/person

Margarita

Supplements Additional Drinks (see available options)

# UPON Angels

## Portuguese Tapas

### ROLEPLAY

Couverture included

*Bread, olives, balsamic oil and butter*

Fried sweet potato chips with red onion jam

Scrambled eggs with farinheira/scrambled eggs with asparagus

Scrambled eggs with truffled hollandaise sauce

Alheira croquettes

Braised mushrooms and leeks 

Nachos with guacamole 

Veal mince

Fish from the garden 

Garlic prawns

Octopus salad

Bolhão Pato style clams

Pear, ham and gorgonzola

Dips with crostini and toasts

*Olive tapenade, dried tomato hummus*

Oysters with green apple and red onion vinaigrette

### DESSERTS

Chocolate mousse with pink peppercorns and fleur de sel

Red fruit cheesecake

Passion fruit panacotta

 Vegan

Choose a menu common to the group.

It is not possible to choose items from different menus.

Advise in case of dietary restrictions.

Two drinks included: soft drink, water with/without water, beer and glass of glass.

Divine 6 itens: 33€/person

Divine 9 itens 40€/person

Divine 12 itens 45€/person

\*Consider that values change.

#### Extras:

Extra Item 5€/person

Welcome Drink 8€/person

Porto Negroni Cocktail

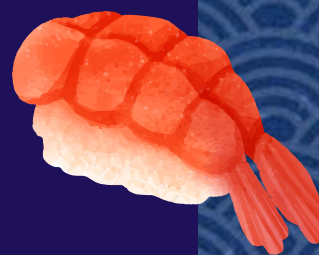
Supplements Additional Drinks (see available options)





# UPON Angels

## sushi



### MENU I

38€

#### STARTERS

Miso  
Shiromi ceviche

#### MAIN

(24 pieces)

Salmon Sashimi  
Tuna Sashimi  
Niguri  
Joe  
Rolls  
Hot Rolls

#### DESSERT

Mocchi Ice Cream

### MENU II

44€

#### STARTERS

Miso  
Shiromi ceviche  
Octopus sunomono  
Guiosas

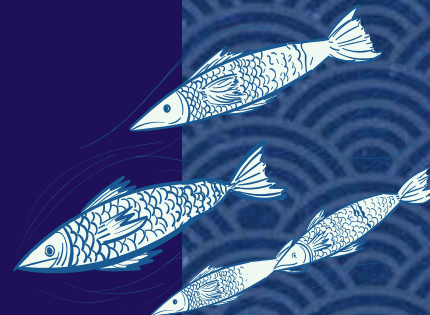
#### MAIN

(30 pieces)

Salmon Sashimi  
Tuna Sashimi  
Niguri  
Joe  
Rolls  
Hot Rolls  
Harumaki

#### DESSERT

Mocchi Ice Cream  
Sweet Harumaki



---

Choose a menu common to the group (menu I or menu II).

It is not possible to choose items from different menus.

Advise in case of dietary restrictions.

Two drinks included: soft drink, water with/without water, beer and glass of glass.

*\*Consider that values change.*

#### Extras:

Welcome drink: 8€ /person

Saké Cocktail

Supplements Additional drinks (see available options)

